

Configuration Tool User Guide

Windows Version Rev 1.0

1. Installation

The application is written in .NET, so you will need to download and install the *Microsoft .NET Common Language Runtime (CLR) 1.1 with J# Redistributable Package*.

You can obtain *.NET CLR* either by using Windows Update, or download offline installation file from Microsoft Download Center at <http://www.microsoft.com/downloads/details.aspx?FamilyId=262D25E3-F589-4842-8157-034D1E7CF3A3&displaylang=en>.

You can obtain *J# Redistributable Package* at: <http://www.microsoft.com/downloads/details.aspx?FamilyId=E3CF70A9-84CA-4FEA-9E7D-7D674D2C7CA1&displaylang=en>

2. Generating the configuration file for Grandstream client

Grandstream products takes configuration file named *cfg<MAC address of device>*. To generate such configuration file for a particular client, run the configuration tool. The application takes the parameters below:

2.1 MAC address

The application takes MAC addresses in two modes:

Sequential: enter in starting MAC address and the number of units, then the configuration file with sequential MAC address will be generated accordingly. Ex. Starting MAC is *000B82010000* and the number of unit is 3. The tool will generate configuration file *cfg000B82010000*, *cfg000B82010001*, *cfg000B82010002* for the devices respectively.

Listing: enter in the list of MAC addresses if they are not sequential. Ex. MAC addresses are *000B82010000*, *000B820100003* and *000B82010005*. . The tool will generate configuration file *cfg000B82010000*, *cfg000B82010003*, *cfg000B82010005* for the devices accordingly.

2.2 Template

The configuration file is generated based on the plain-text template file, you can browse it from the directory where you store it.

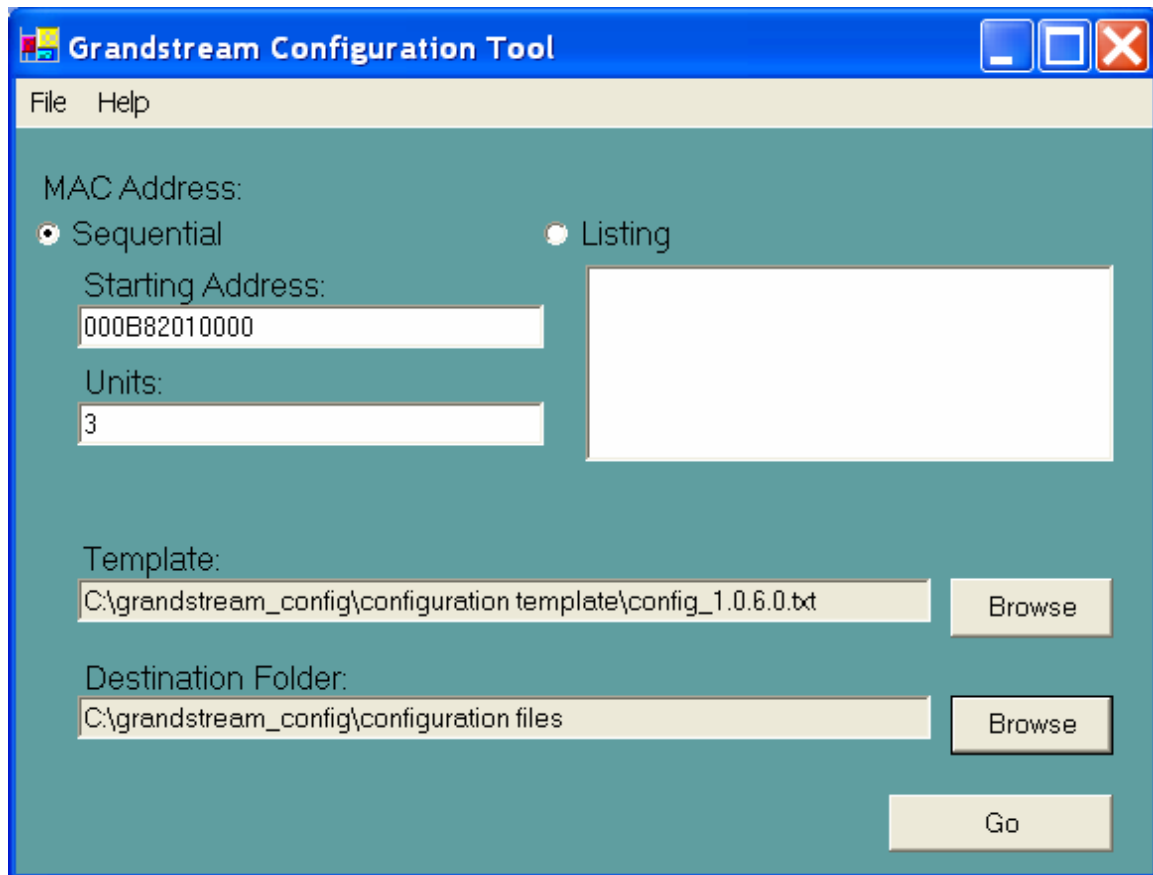
Note: The template file must contain at least one parameter named Pxx which is corresponding to a special configuration setting. The latest template file is available on the website.

2.3 Destination folder

You can specify the folder where you want to store the configuration file.

Note: You need to copy the generated configuration file for grandstream devices to the TFTP or HTTP server root directory to allow the device pull out and load it.

3. View of Application



4. Entries That Should NOT Be Set by Service Providers

In general, the end user network settings are NOT controlled by VoIP service provider, so they should not be touched by Voice Service Providers.

Following is a section from our configuration file template that comes with the package and it should be leaved as default settings.

```
#-----  
# End User Settings  
#-----  
  
# End User Password  
P196 = 123  
  
# DHCP support. 0 - yes, 1 - no  
P8 = 0  
  
# PPPoE support. PPPoE user ID  
#P82 =  
  
# PPPoE password  
P83 =  
  
# IP Address. Ignore if DHCP or PPPoE is used  
P9 = 192  
P10 = 168  
P11 = 1  
P12 = 160  
  
# Subnet mask. Ignore if DHCP or PPPoE is used  
P13 = 255  
P14 = 255  
P15 = 255  
P16 = 0  
  
# Router. Ignore if DHCP or PPPoE is used  
P17 = 192  
P18 = 168  
P19 = 0  
P20 = 1
```

Grandstream Networks Inc. Configuration Tool User Guide for Windows

Use this DNS server. (if specified).

P92 =

P93 =

P94 =

P95 =

DNS 1. Ignore if DHCP or PPPoE is used

P21 =

P22 =

P23 =

P24 =

DNS 2. Ignore if DHCP or PPPoE is used

P25 = 0

P26 = 0

P27 = 0

P28 = 0